

ASSEMBLY INSTRUCTIONS

12 mm ARBOR SPESIAL VÅTROMSPLATE OG

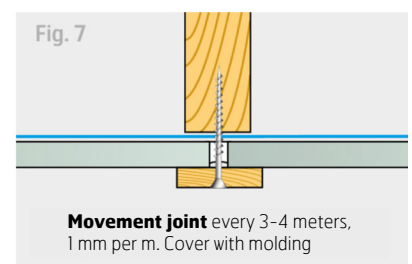
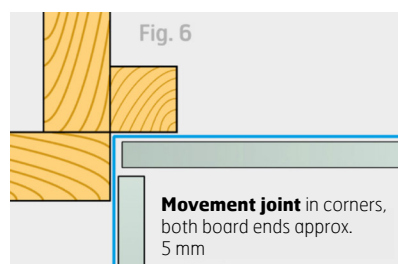
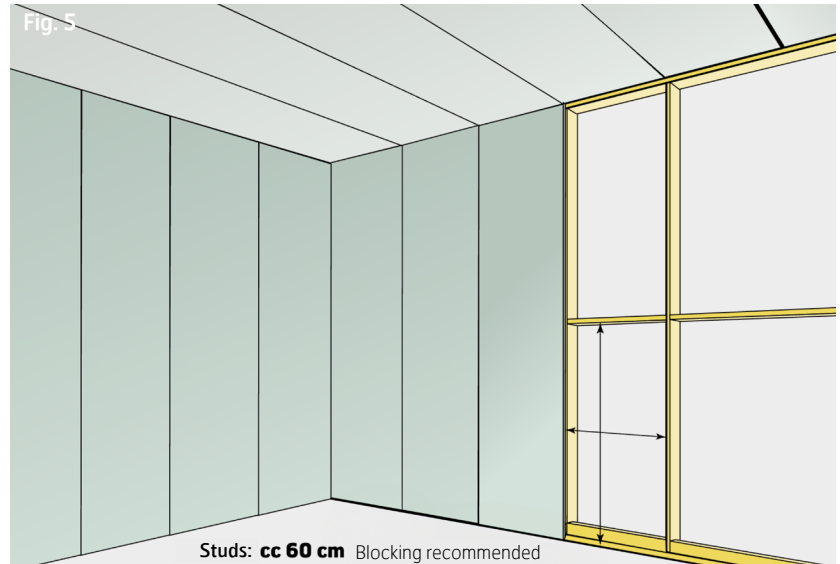
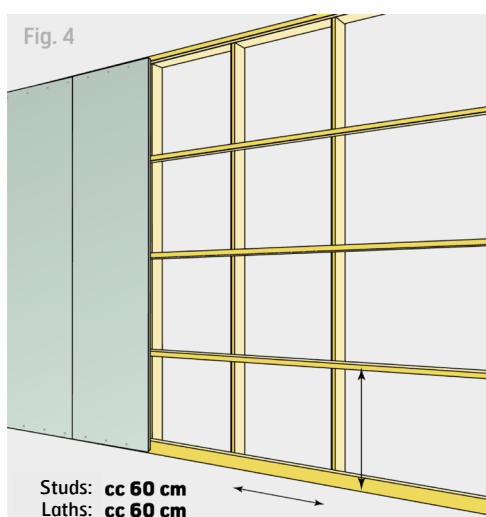
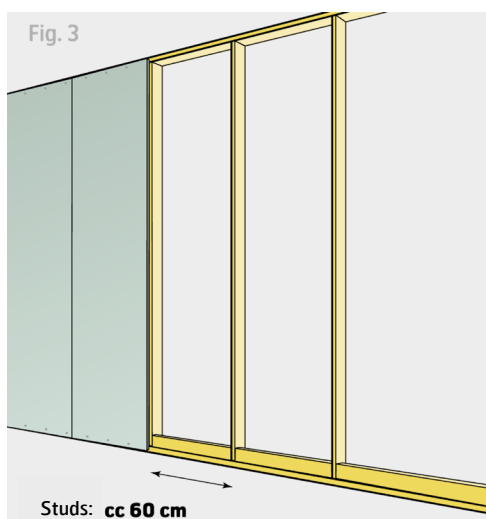
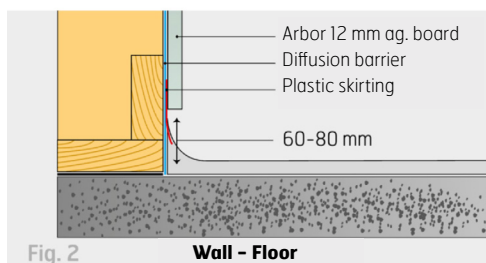
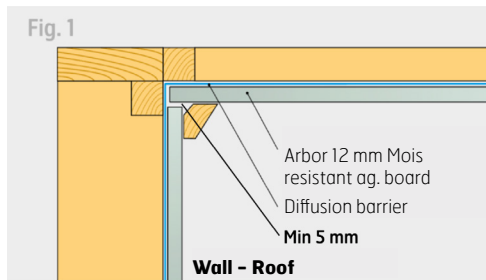
ARBOR FUKTBEST LANDBRUKSPLATE

(Special Wet Room board and Moist Resistant Agricultural board)

With tongue, groove and chamfer or click joint



Applies to **C** **€**- marked **STANDARD** quality and **C** **€**- marked **MOISTURE RESISTANT**



AREAS OF USE

Arbor SPESIAL VÅTROMSPLATE and Arbor FUKTBEST LANDBRUKSPLATE are used in rooms where you need additional protection against moisture. The agricultural boards are well suited in all types of premises such as barns, food industry, slaughterhouse, bakery, locker rooms, treatment plants, etc.

IMPORTANT POINTS

- The Chipboards must be protected from moisture during transportation and storage. They must be stored at room temperature. Place 3-4 pieces of plank on the floor and the boards on top of these.
- Plastering, casting, masonry, and painting must be completed and dried before the boards are placed in the building for air conditioning.
- Ventilation is essential for a good result.
- The boards should be assembled immediately after opening the packaging.
- The installation should take place with a distance to corners from the floor and ceiling, doors, and windows, as well as other fixed building details to make room for any expansion. Expansion joint in corners and against fixed structures should be 5 mm.
- Arbor products are subject to thorough quality control, however faults may be present on some products. The products must therefore be checked before installation in accordance with our assembly instructions. Our liability when defects occur is limited to the value of the part of the product that is defective.

ASSEMBLY INSTRUCTIONS

12 mm ARBOR SPESIAL VÅTROMSPLATE OG

ARBOR FUKTBEST LANDBRUKSPLATE

(Special Wet Room board and Moist Resistant Agricultural board)

With tongue, groove and chamfer or click joint



Glued with waterproof glue or silicone. Mounted with nails, screws or staples, distance 15 cm in the joint, otherwise 20 cm
Use a partly threaded screw

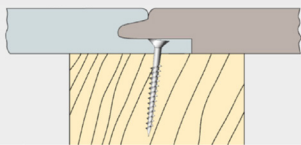


Fig. 8

Boards with a click seam should be glued together with water-resistant, alcohol-based glue.

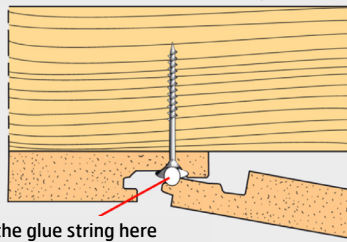
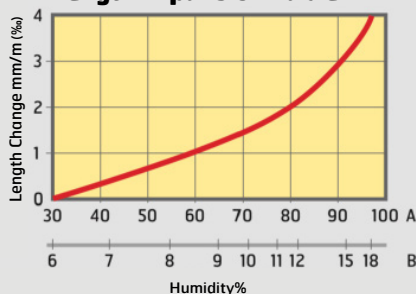


Fig. 9

Place the glue string here

Length Expansion Table



A= Relative Humidity
B= The Boards Equilibrium

Example:

When humidity changes from 30% to 40% then the expansion will be about 0.3 – (0.3 mm per 1 m), but if humidity changes from 90% to 100% the expansion will be approx. 1 – i.e., 1.0 mm per 1 m.

ASSEMBLY INSTRUCTIONS

1. The boards are mounted on straightened studs with a center distance cc 60 cm (look at figure 3 and 5) or on horizontal laths without support from vertical plate joints (look at figure 4). Internal and external corners must then be vertically blocked with the same lath dimension as usual. Max lath distance 60cm. For studs in agricultural buildings, a minimum of one block is recommended (see figure 5). There must be installed extra horizontal blocking if heavy objects are to be hung on the wall.
2. Start with the first board on the left, with the tongue towards the corner. This could also be cut off to obtain a neater corner. And remember 5 mm distance for the expansion joint (look at figure 6). Use a level or a laser.
3. Glue all boards together with bostik H750 or equivalent. The boards must also be sealed at the ends by sealant/paint/silicone.
4. Place the board onto two wooden blocks with a 5 mm distance from the floor.
5. The boards are attached with galvanized nails 20/50, with 10 mm back staples or with screws made for laminate/fiber/wood, preferably self-drilling (4.2 x 25 mm) with a distance of 15 cm. And with approx. 20 cm distance at the top and bottom (look at figure 8-9). Remember to adjust the pressure correctly when using a nail gun. Against the outer wall, the installation must take account for the moisture barrier.
6. An expansion joint of 1 mm per m, must be inserted for wall or ceiling lengths over 3-4 running meters. (look at figure 7).
7. Arbor's corner strip COMBLIST (Combi Moulding) is recommended for both inside and outside corners.

CLEANING

The boards can be cleaned with ordinary detergents or, if necessary, high-pressure washed with cold water at maximum pressure 80 bar. The gap between the spray head and the board must be at least 30 cm.

REFERENCES

SINTEF Building and Infrastructure.
Norwegian Building Research Institute series No. 571.046 Chipboard, types, and properties
543.204 Building panels on walls and ceilings
421.132 Moisture mechanics

TECHNICAL DATA

THICKNESS:	12 mm
FORMAT:	620 x 2440/2600/2700 mm
VISABLE MEASURE:	600x2440/2600/2700 mm
COVERAGE:	1,46 / 1,56 / 1,62 m ²
JOINTS:	Tongue/Groove Fas/Click seam
FIXING:	Hidden
WEIGHT:	One board approx. 12/13,5/14 kg 1 m ² approx. 8 kg Package of 48 boards about 620/630/670 kg



ARBOR

8693 Hattfjelldal / Tlf. 75 18 50 00
www.arbor.no / arbor@arbor.no