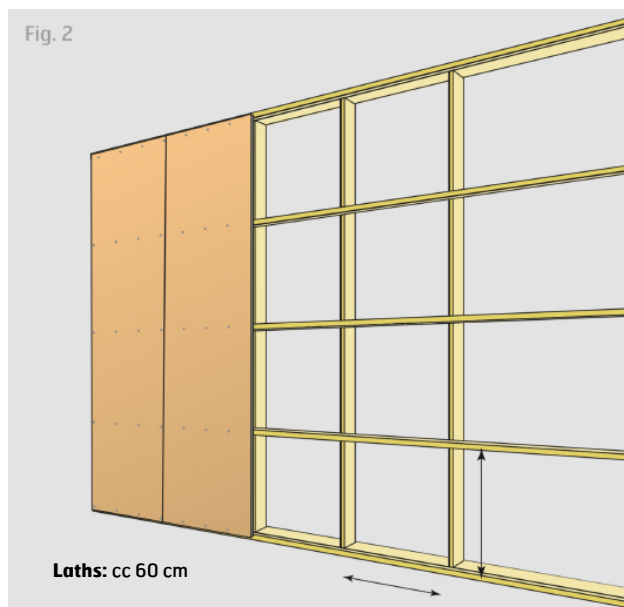
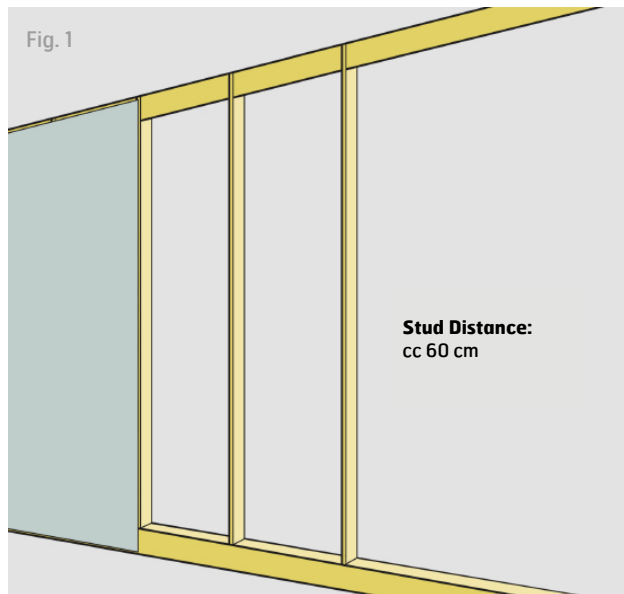
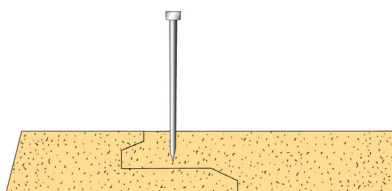
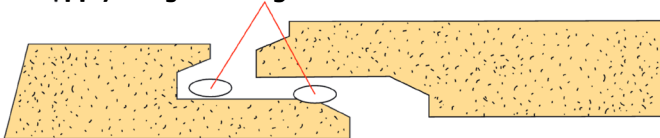


ASSEMBLY INSTRUCTIONS

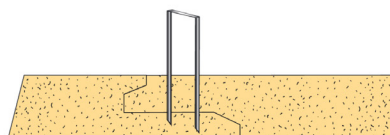
12 MM ARBOR KILFALSVEGG (WEDGE WALL)



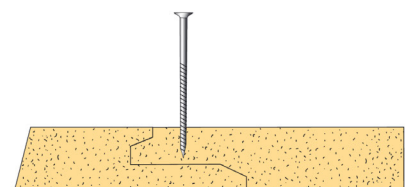
Apply the glue strings here



Nail



Staple



Screw

AREAS OF USE

The boards have a special wedge joint and are used for walls where you want to put up wallpaper. Arbor kilfalsvegg (wedge wall) can be used in all rooms where there are no requirements for moisture resistant materials. Use Arbor kilfalsvegg fuktbestandig (wedge wall moisture resistant) in rooms where moisture exposure of the wall may occur. We recommend Arbor grunnet kilfals (primed wedge wall) for walls you want to put wallpaper on as you won't need to prime them beforehand. Use Arbor malingsklar (paint ready) if you are to paint directly onto the board.

IMPORTANT POINTS

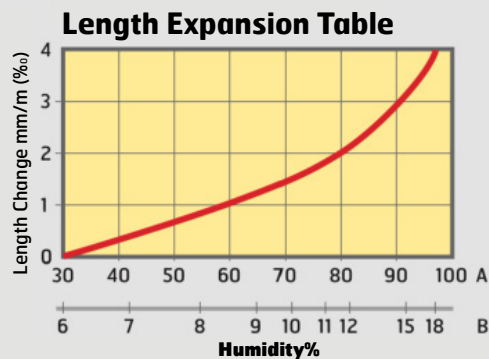
- The Chipboards must be protected from moisture during transportation and storage. They should preferably be stored inside at room temperature. If you place them outside, put 3-4 pieces of plank on a substrate with a moisture barrier on the ground.
- Before mounting the boards, let them acclimatize inside the building for 2 – 3 days.
- The backsides of the boards are marked with a stamp.
- Plastering, casting and masonry must be completed and dried before mounting the boards. The building must be heated to a minimum of 15 degrees Celsius and the relative humidity (RH) should not be more than 65%.
- Ventilation is essential for a good result.
- The installation should take place with a minimum distance of 4 mm to corners from the floor and ceiling, doors, and windows, as well as other fixed building details to make room for any expansion.
- For wall surfaces longer than 10 m, an additional 1 mm expansion joint should be inserted per 1 m wall. This can be added by interior partition walls. The boards should not be joined at doors and windows.
- Remember to adjust the pressure correctly when using a nail gun.
- Arbor products are subject to thorough quality control, however faults may arise on some products. The products must therefore be checked before installation in accordance with our assembly instructions. Our liability when defects occur is limited to the value of the part of the product that is defective.
- Go to www.arbor.no for complete assembly instructions and recommendations for glue and grout.

ASSEMBLY INSTRUCTIONS

12 MM ARBOR KILFALSVEGG (WEDGE WALL)



Fig. 3



A= Relative Humidity
B= The Boards Equilibrium Humidity

Example:

When humidity changes from 30% to 40% then the expansion will be about 0.3 – (0.3 mm per 1 m), but if humidity changes from 90% to 100% the expansion will be approx. 1- i.e., 1.0 mm per 1 m.

TECHNICAL DATA

THICKNESS: 12 mm

FORMAT: 620/1220 x 2390/2440/2740 mm

VISABLE MEASURE: 600/1200 x 2390/2440/2740 mm

COVERAGE: 1,43 / 1,46 / 2,87 / 2,93 / 3,29 m²

JOINTS: Kilfals

WEIGHT: One board approx.
12 / 24 kg
1m² approx. 8 kg
Package of 55/52 pcs.
about 670/1200 kg

ASSEMBLY INSTRUCTIONS

1. The boards are mounted on straightened studs with a center distance C/C 60 cm (see figure 1) or on horizontal lathers without support from vertical plate joints. Max lath distance 60cm. Internal and external corners must then be vertically blocked with the same lath dimension as usual. There must be installed extra horizontal blocking if heavy objects are to be hung on the wall.
2. The boards are mounted with screws or staples and glue
3. Always glue the joint with 2 glue strings. One should be laid towards the edge and one at the bottom of the joint (look at the illustration on page 1). Pull the boards close together so that the joint is filled with glue. Go to www.arbor.no for glue recommendations and to follow the manufacturer's recommendations.
4. Start with the first board on the left, with the tongue towards the corner. This could also be cut off to obtain a neater corner. And remember 4 mm distance for expansion joint. Use a level.
5. Place the board onto two wooden blocks with a 5 mm distance from the floor.
6. The boards are attached with framing nails 20/50 or with 10 mm back staples with a distance of 15-20 cm. Remember to adjust the pressure correctly when using a nail gun. 120 cm boards should be attached first on one of the long sides, then the middle, and then on the last long side before the top and bottom.
7. Surface treatment before wallpapering.
Use boards with a width of 120 or 60 cm. Check the surface for damages. Damages can be seen through thin wallpaper and should be fixed beforehand. The boards should be sanded clean of small edges and glue, with a sanding tool or regular sandpaper. Wallpapering is done straight on the boards. Wallpaper glue is applied with a roller. Follow the glue-/wallpaper manufacturer's instructions. The board moisture should not exceed 10% before putting on the wallpaper.
8. Any damage to the surface or nail holes should be plastered and sanded down. Primer/paint is applied in the number of coats desired. Follow the paint manufacturer's instructions.

For painting, use a fiber cloth. Alternatively, use boards with grooves and tongues, width 60 cm, with V-FUG

GENERAL INFORMATION

Arbor's wall boards are awarded the Nordic price SVANEMERKET (The Nordic Ecolabel) for very good environmental properties.



ARBOR

8693 Hattfjelldal / Tlf. 75 18 50 00
www.arbor.no / arbor@arbor.no