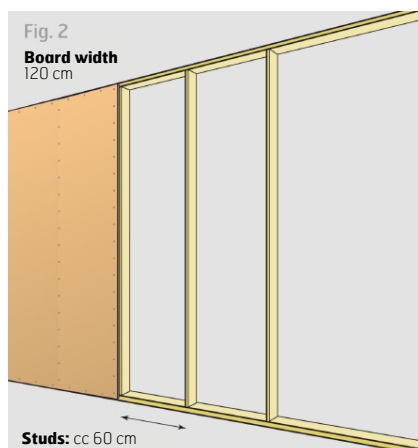
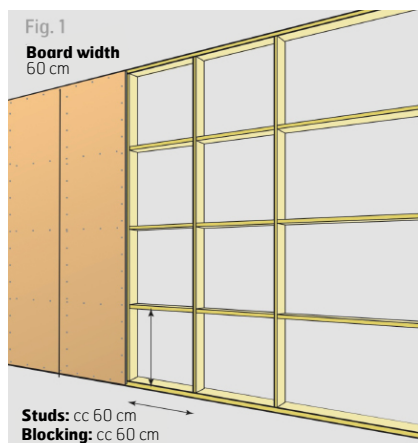
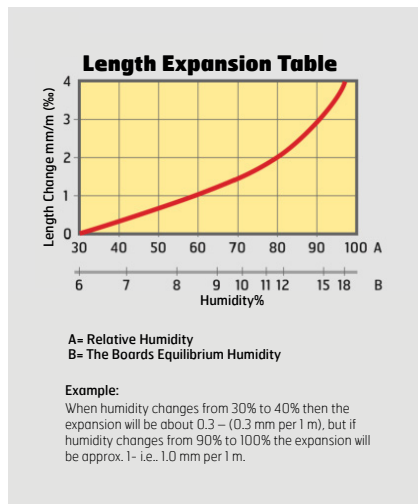


# ASSEMBLY INSTRUCTIONS

12 mm ARBOR VEGG SPON  
(Chipboard wall)



Applies to **C** **€**- marked **STANDARD** quality and **C** **€**- marked **MOISTURE RESISTANT**



## AREAS OF USE

Rabbets are used for walls to be wallpapered and tongues and grooves are used for walls to be painted. Arbor 12 mm Standard VEGG SPON (Chipboard Walls) can be used in every room where there are no requirements for moisture resistant materials. Use Arbor VEGG FUKTBEST (Wall MoistureBest) where moisture exposure of the wall may occur.

## IMPORTANT POINTS

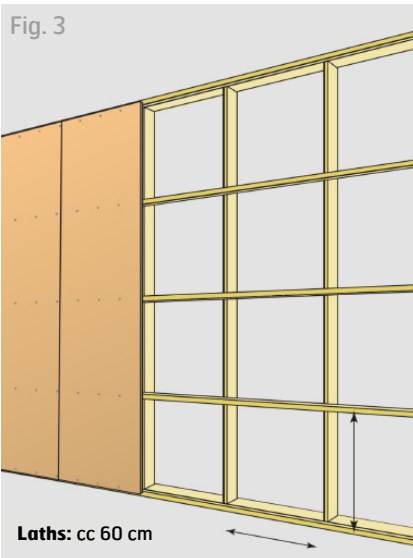
- The Chipboard must be protected from moisture during transportation and storage. They should preferably be stored inside at room temperature. If you place them outside, put 3-4 pieces of plank on a substrate with a moisture barrier on the ground.
- Before mounting the boards, let them air out inside the building for 2 – 3 days.
- Plastering, casting and masonry must be completed and dried before mounting the boards. The building must be heated to a minimum of 15 degrees Celsius.
- Ventilation is essential for a good result.
- The installation should take place with a minimum distance of 4 mm to corners from the floor and ceiling, doors, and windows, as well as other fixed building details to make room for any expansion.
- For wall surfaces longer than 10 m, an additional 1 mm expansion joint should be inserted per 1 m wall. This can be added by interior partition walls. The boards should not be joined at doors and windows.
- Arbor products are subject to thorough quality control, however faults may arise on some products. The products must therefore be checked before installation in accordance with our assembly instructions. Our liability when defects occur is limited to the value of the part of the product that is defective.
- Go to [www.arbor.no](http://www.arbor.no) for complete assembly instructions and recommendations for glue and grout.

## ASSEMBLY INSTRUCTIONS

1. The boards are mounted on straightened studs with a center distance cc 60 cm. Boards with a width of 60 cm should be blocked (look at figure 1). Those with a width of 120 cm should not be blocked (look at figure 2). Boards with groove and tongue can be mounted on horizontal laths without support from vertical plate joints. Max lath distance 60cm. Internal and external corners must then be vertically blocked with the same lath dimension as usual. There must be installed extra horizontal blocking If heavy objects are to be hung on the wall.
2. The boards are mounted with screws or staples and glue. (Look at figure 4).
3. Boards with tongues and grooves and chamfer, should not be glued. Boards with rabbets for wallpapering should be glued with two glue strings (Look at figure 4).

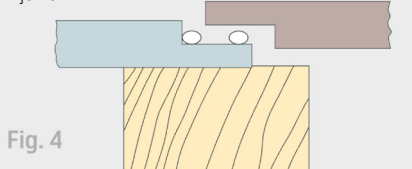
# ASSEMBLY INSTRUCTIONS

12 mm ARBOR VEGG SPON  
(Chipboard wall)



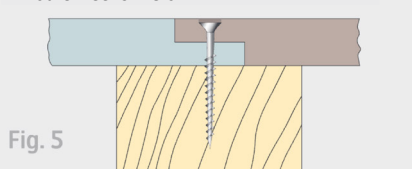
#### Rabbet is used for wallpapers.

Glues with two glue strings. One is laid at the bottom of the joint and one on the edge of the joint.



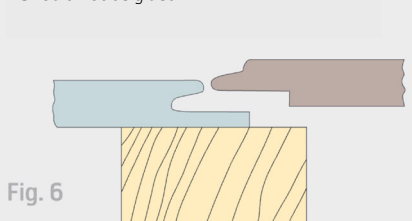
#### For wallpapers

120/60 cm boards. Glued. Mounted with nails, screws or staples, distance 10 cm in the joint – otherwise 15–20 cm.



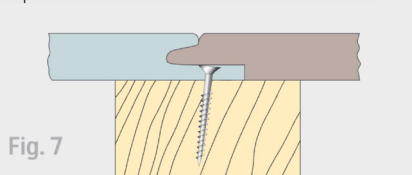
#### Tongue and groove are used for painting.

Should not be glued.



#### For painting

60 cm with tongue and groove. Not glued. Mounted with nails, screws or staples, spaced 15 cm.



## TECHNICAL DATA

**THICKNESS:** 12 mm

**FORMAT:** 260 x 2390/2440 mm  
1220 x 2390/2440/2500/  
2600/2700/2740 mm  
620 x 2700 (only tongue and groove)

**VISABLE**

**MEASURE:** 600/1200 x 2390/2440/  
2500/2600/  
2700/27400 mm

**COVERAGE:** 1,43 / 1,46 / 2,87 / 2,93 /  
3,00 / 3,12 / 3,29 m<sup>2</sup>

**JOINTS:** Tongue/Groove  
Rabbet

**FIXING:** Hidden

**WEIGHT:** Package of 55/52/54  
about 660/756 kg

## REFERENCES

SINTEF Byggforsk. Byggforskserien No:

571.046 Chipboard, types, and properties

543.204 Building panels on walls and ceilings

421.132 Moisture mechanics

Go to [www.arbor.no](http://www.arbor.no) for complete assembly instructions and glue recommendations.

4. Start with the first board on the left, with the tongue towards the corner. This could also be cut off to obtain a neater corner. And remember 4 mm distance for expansion joint. Use a level.
5. Place the board onto two wooden blocks with a 5 mm distance from the floor.
6. The boards are attached at the joint with screws made for laminate/fiber/wood, preferably self-drilling (4.2 x 25mm) or 10mm staples. 120 cm boards should be attached first on one of the long sides, then the middle, and then on the last long side before the top and bottom. Look at figures 4-7 with regard to the installation of boards of different widths and wallpapering or painting.
7. Surface treatment before wallpapering.  
Use boards with rabbets with a width of 120 or 60 cm. Glued see figure 4-5). Check the surface for damages. Damages can be seen through thin wallpaper and should be fixed beforehand. The boards should be sanded clean of small edges and glue, with a sanding tool or regular sandpaper. Wallpapering is done straight on the boards. Wallpaper glue is applied with a roller. Follow the glue-/wallpaper manufacturer's instructions.
8. Surface treatment before painting  
Use boards with tongues and grooves, width 60 cm, with V-FUG (See figure 6-7). Any damage to the surface or nail holes should be plastered and sanded down. Primer/paint is applied in the number of coats desired. Follow the paint manufacturer's instructions.
9. The boards should not be mounted or painted when the relative humidity (RH) exceeds 70%. The temperature should be above 15 degrees Celsius. The humidity of the board should not exceed 10-11%

## GENERAL INFORMATION

Arbor's wall boards are awarded (The Nordic Ecolabel) the Nordic price "SVANEMERKET" for very good environmental properties.



**ARBOR**

N. 8693 Hattfjelldal / Tlf. 75 18 50 00  
[www.arbor.no](http://www.arbor.no) / [arbor@arbor.no](mailto:arbor@arbor.no)