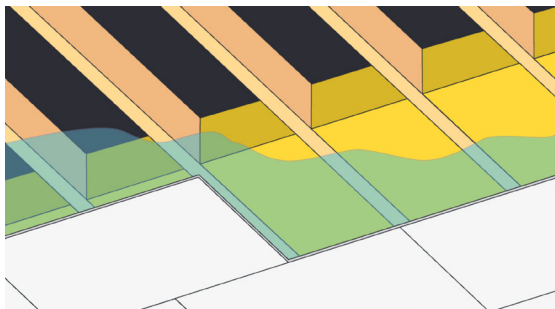
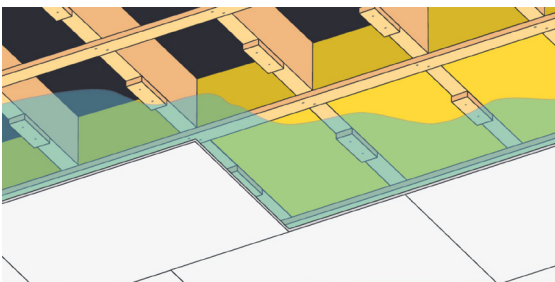


ASSEMBLY INSTRUCTIONS

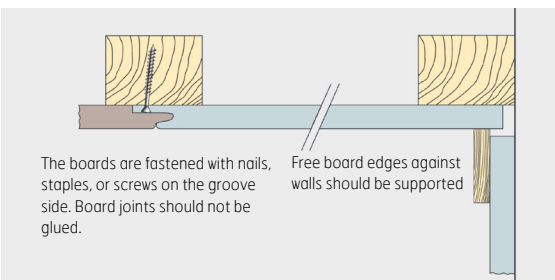
12 MM ARBOR PROFF HIMLING (Professional Ceiling)



The boards are mounted across on leveled laths or joists.



Longitudinal mounting with blocking.



The boards are fastened with nails, staples, or screws on the groove side. Board joints should not be glued.

Free board edges against walls should be supported

Expansion joint 10 mm.

TECHNICAL DATA

THICKNESS: 12 mm

FORMAT: 620 x 1220 mm

VISIBLE MEASURE: 600 x 1200 mm

COVERAGE: 0,75 m²

JOINTS: Tongue/Groove

WEIGHT: One board approx. 6 kg
1 m² approx. 8 kg
Package of 52 boards

AREAS OF USE

The boards can be used in all dry rooms where there are joists, beams or battens for fastening. Roof boards can be used for buildings with proper bathroom ventilation. The cut surfaces of the roof are sealed with sanitary silicone. You are welcome to install down-lights or other lighting in/on the boards.

IMPORTANT POINTS

- The plates must be protected from moisture during transportation and storage.
- They must be stored laying down on a leveled surface in room temperature with sealed packaging.
- The boards should be air-conditioned for 3–4 days before being installed.
- Plastering, casting, masonry and painting must be finished and dried before mounting the boards. Heating should be initiated. The temperature should be at least 15 degrees Celsius when mounting the boards, and the Relative Humidity (RH) should not be above 65%.
- Ventilation is essential for a good result.
- The plates should be installed immediately after opening the packaging.
- The installation should take place with a 10 mm distance to corners, walls, and other fixed building details to make room for any expansion. The boards will experience movement with changes in humidity.
- If there is a need for a moisture barrier, we recommend 0,15 mm plastic wrap. It should be but between the laths and joists. If the boards are mounted on brick/concrete, there should be installed a moisture barrier between the masonry/concrete and the roof boards.
- Arbor products are subject to thorough quality control, however faults may be present on some products. The products must therefore be checked before installation in accordance with our assembly instructions. Our liability when defects occur is limited to the value of the part of the product that is defective.

MONTERING

1. Where 60 cm ARBOR PROFF HIMLING are used on the walls, the pattern on the wall and ceiling should be coordinated. If possible, customize the roof boards so that the first and last row of boards have the same width. The first row of boards should be mounted using string or laser.
2. If the surface of the ceiling is longer than approx. 20, use a continuous 10–20 mm expansion joint. The joint can be covered, for example, by a partition wall.
3. The boards are mounted transversely on leveled laths and joists with a center distance of cc 60 cm. They can also be mounted lengthwise on laths, however blocking with a distance of 60 cm is necessary to avoid unevenness. The boards can be mounted directly on an already existing ceiling.
4. The boards should be mounted in a bandage pattern and fastened with nails, staples or screws in the groove side, spaced 15 cm. As well as two attachment points on the blocking beam. It is recommended to use particle board staples 17/40 or hot-dip galvanized nails 20/40. Staples should have a minimum 10 mm straight back and minimum 35 mm leg length. Remember to adjust the pressure on the nail gun. Use a special screw with a flat head.
5. Board joints must not be glued. The boards must be supported against walls and fixed structures.
6. In case of varying temperature and humidity conditions, the laths should be mounted with a distance of 30 cm.

REFERENCES

- SINTEF building and infrastructure. The Norwegian Building Institute series no. 543.204 Building boards on walls and ceiling.
421.132 Moisture Mechanics.
522.512 Sound insulation properties of light floor dividers. Measured values.
571.046 chipboards. Types and characteristics.



ARBOR

N. 8693 Hattfjelldal / Tlf. 75 18 50 00
www.arbor.no / arbor@arbor.no