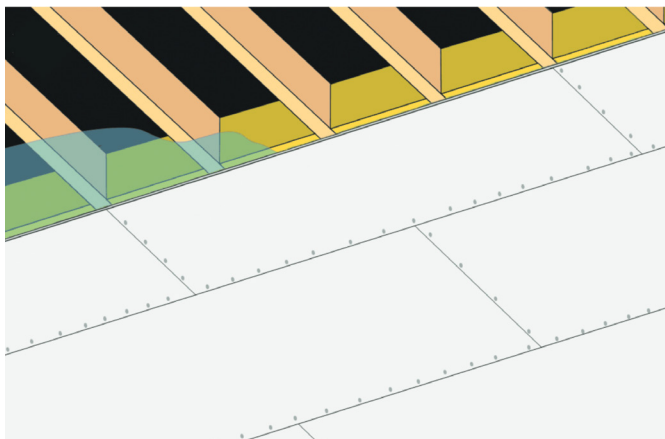


ASSEMBLY INSTRUCTIONS

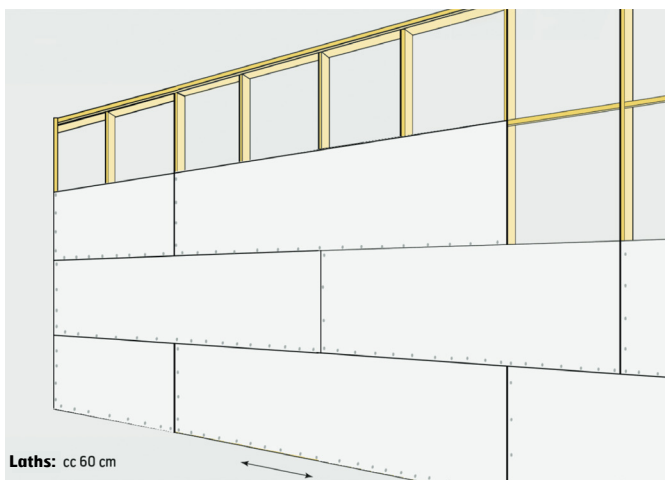
12 mm ARBOR MULTIPLATE TAK OG VEGG

(Multi board ceiling and wall)

For plain walls and plain ceilings



More illustrations for ceilings on page 2



Laths: cc 60 cm

More illustrations for walls on page 3

Apply the glue strings here

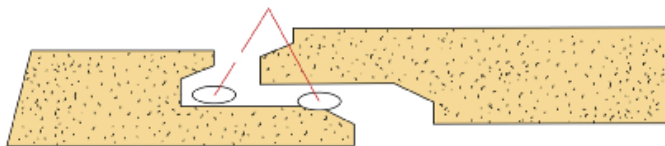


Fig. 1

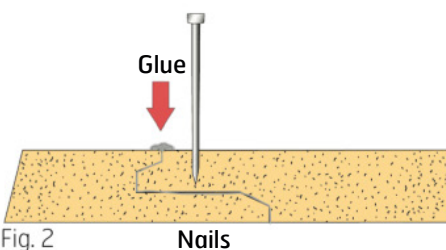


Fig. 2

Nails

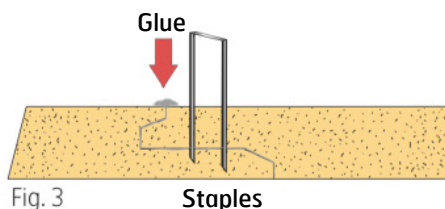


Fig. 3

Staples

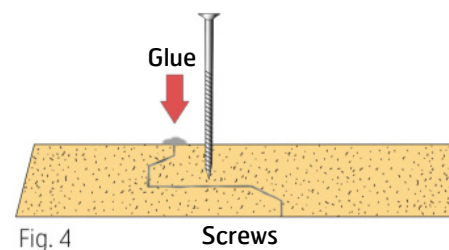


Fig. 4

Screws

AREAS OF USE

Arbor MULTIPLATE ceiling/wall is a pre-primed board that can be used where you want smooth/plain walls and ceilings. The board can be painted or wallpapered. It has a 4-sided wedge profile that can be used for every room where moisture-resistant materials are not required.

IMPORTANT POINTS

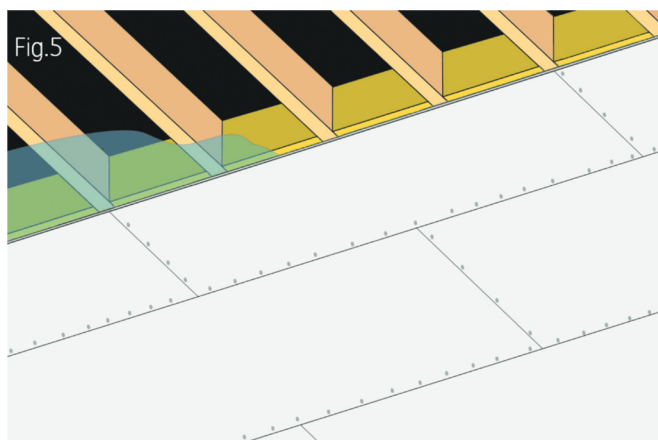
- The Chipboards must be protected from moisture during transportation and storage. They should preferably be stored inside at room temperature. If you place them outside, put 3-4 pieces of plank on a substrate with a moisture barrier on the ground.
- Before mounting the boards, let them acclimatize inside the building for 2 – 3 days.
- The backsides of the boards are marked with a stamp.
- Plastering, casting and masonry must be completed and dried before mounting the boards. The building must be heated to a minimum of 15 degrees Celsius and the relative humidity (RH) should not be more than 65%.
- Ventilation is essential for a good result.
- The installation should take place with a minimum distance of 4 mm to corners from the floor and ceiling, doors, and windows, as well as other fixed building details to make room for any expansion.
- For wall surfaces longer than 10 m, an additional 1 mm expansion joint should be inserted per 1 m wall. This can be added where you intend to put in interior partition walls. The boards should not be joined at doors and windows.
- Remember to adjust the pressure correctly when using a nail gun.
- Arbor products are subject to thorough quality control, however faults may arise on some products. The products must therefore be checked before installation in accordance with our assembly instructions. Our liability when defects occur is limited to the value of the part of the product that is defective.
- Go to www.arbor/multiplate.no for complete assembly instructions and recommendations for glue and grout.

ASSEMBLY INSTRUCTIONS

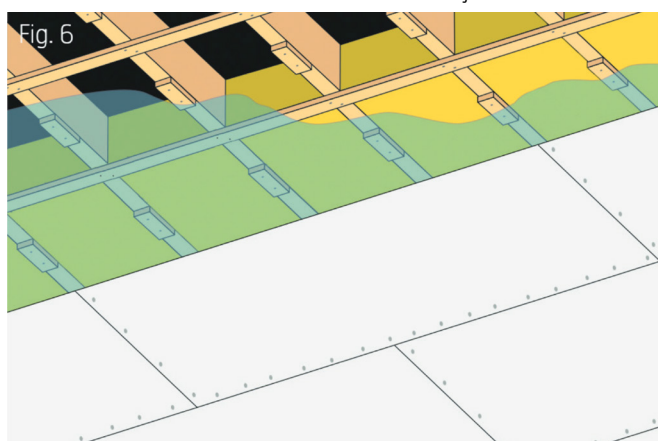
12 mm ARBOR MULTIPLATE TAK OG VEGG

(Multi board ceiling and wall)

For plain ceilings



The boards are mounted across laths or joists



Longitudinal assembly with blocking

TECHNICAL DATA

THICKNESS:	12 mm
FORMAT:	620 x 2420mm
VISABLE MEASURE:	600 x 2400 mm
COVERAGE:	1,44 m ²
JOINTS:	4 sided wedge (KILFALS)
FIXING:	Through
WEIGHT:	One board approx. 12 kg Package of 52 boards: about 662 kg
NOBB:	60017016

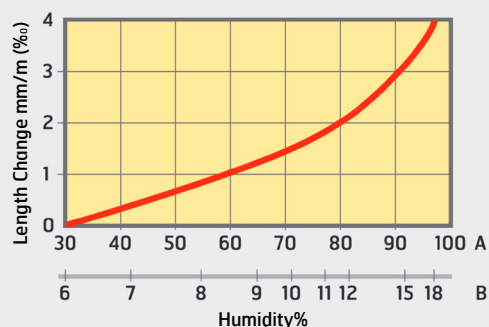
AREAS OF USE

Arbor MULTIPLATE ceiling is a pre-primed board that can be used for plain ceilings. The board can be painted. It has a 4-sided wedge profile that can be used for every room where moisture-resistant materials are not required.

ASSEMBLY INSTRUCTIONS

1. The boards are mounted with nails, screws or staples and glue. They must be nailed/stapled/screwed with a 15-20 cm distance.
2. If the surface of the ceiling is longer than approx. 20 m, an additional 10-20 mm expansion joint should be inserted. The joint can be covered, for example by a partition wall.
3. The board are mounted across straightened laths with a center distance of cc 60 cm. They can also be mounted vertically along the laths, however blocking with a distance of 60 cm is necessary to avoid unevenness.
4. The boards can be mounted directly on an already existing ceiling.
5. Boards with this type of wedge joint should be glued with two glue strings (see illustration. Page 1). Put the boards close together to fill the profile with glue. Go to www.arbor.no for glue recommendations and follow the glue manufacturer's instructions.
6. Start with the first board on the left, with the tongue towards the corner. This could also be cut off to obtain a neater corner. And remember 4 mm distance for expansion joint.
7. Any damage to the surface or nail holes should be plastered and sanded down. Paint is applied in the number of coats desired. Follow the paint manufacturer's instructions.

Length Expansion Table



A= Relative Humidity
B= The Boards Equilibrium Humidity

Example:

When humidity changes from 30% to 40% then the expansion will be about 0.3 – (0.3 mm per 1 m), but if humidity changes from 90% to 100% the expansion will be approx. 1- i.e.. 1.0 mm per 1 m.



ARBOR

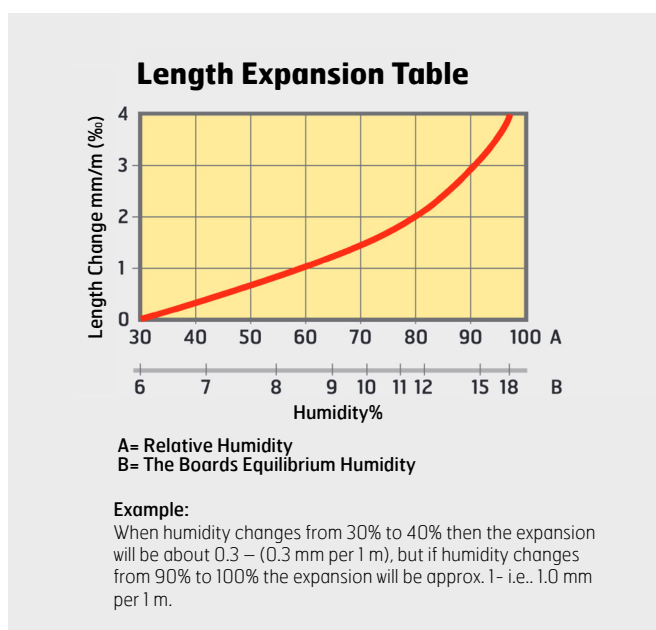
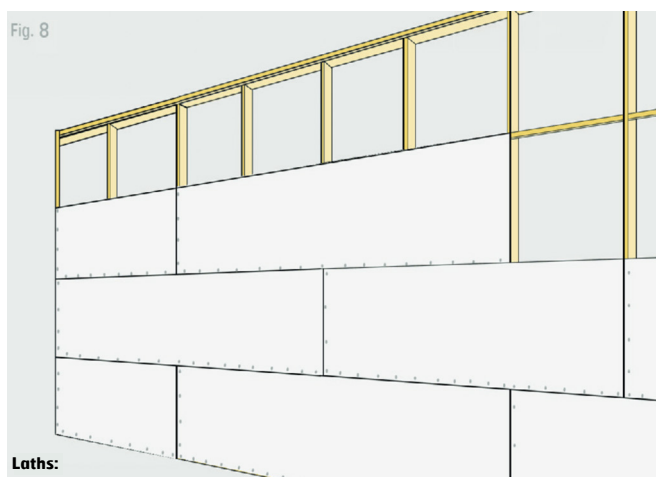
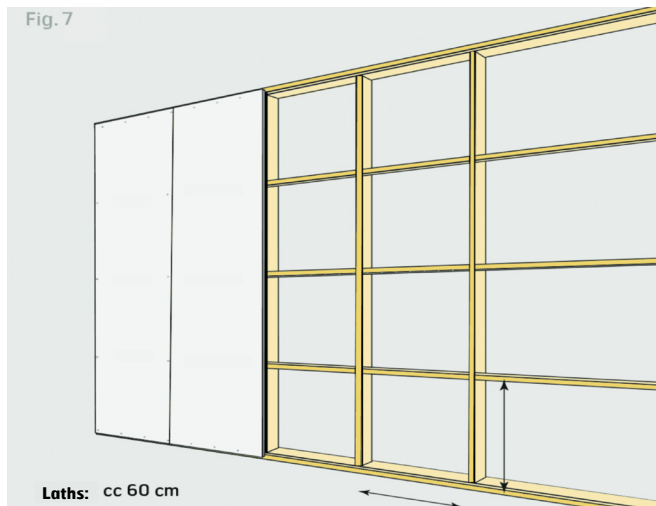
8693 Hattfjelldal / Tlf. 75 18 50 00
www.arbor.no / arbor@arbor.no

ASSEMBLY INSTRUCTIONS

12 mm ARBOR MULTIPLATE TAK OG VEGG

(Multi board ceiling and wall)

For plain walls



AREAS OF USE

Arbor MULTIPLATE wall is a pre-primed board that can be used for plain walls. This board can easily be used in rooms with high ceilings, for example stairwells. The board has KILFAS on 4 sides and can be used in every room where moisture-resistant materials are not required.

ASSEMBLY INSTRUCTIONS

1. The boards are mounted on straightened studs with a center distance cc 60 cm (see figure 7/8). There must be installed extra horizontal blocking if heavy objects are to be hung on the wall. Boards with KILFAS can also be mounted on horizontal laths without support from vertical plate joints. Max lath distance 60cm (see figure 7). Internal and external corners must then be vertically blocked with the same lath dimension as usual.
2. The boards are mounted with nails, screws or staples and glue. They must be nailed/stapled/screwed with a 15-20 cm distance.
3. Boards with wedge joint should be glued with two glue strings (see illustration. Page 1). Put the boards close together to fill the profile with glue. Got o www.arbor.no for glue recommendations and follow the glue manufacturer's instructions.
4. Start with the first board on the left, with the tongue towards the corner. This could also be cut off to obtain a neater corner. And remember 4 mm distance for expansion joint.
5. Surface treatment before wallpapering.
Check the surface for damages. Damages can be seen through thin wallpaper and should be fixed beforehand. The boards should be sanded clean of small edges and glue with a sanding tool or regular sandpaper. Wallpapering is done straight on the boards. Wallpaper glue is applied with a roller. Follow the glue-/wallpaper manufacturer's instructions. The humidity of the board should not exceed 10% before wallpapering.
6. Any damage to the surface or nail holes should be plastered and sanded down. Paint is applied in the number of coats



ARBOR

N. 8693 Hattfjellidal / Tlf. 75 18 50 00
www.arbor.no / arbor@arbor.no